

# **N.C. Wetlands Restoration Program (NCWRP)**

**Department of Environment &  
Natural Resources**



N.C. Wetlands Restoration Program  
NCDENR DWQ



**HIGH  
WATER**

**ROAD  
CLOSED**







# Watershed Planning for Mitigation in NC - two levels

- **Watershed Restoration Plans**

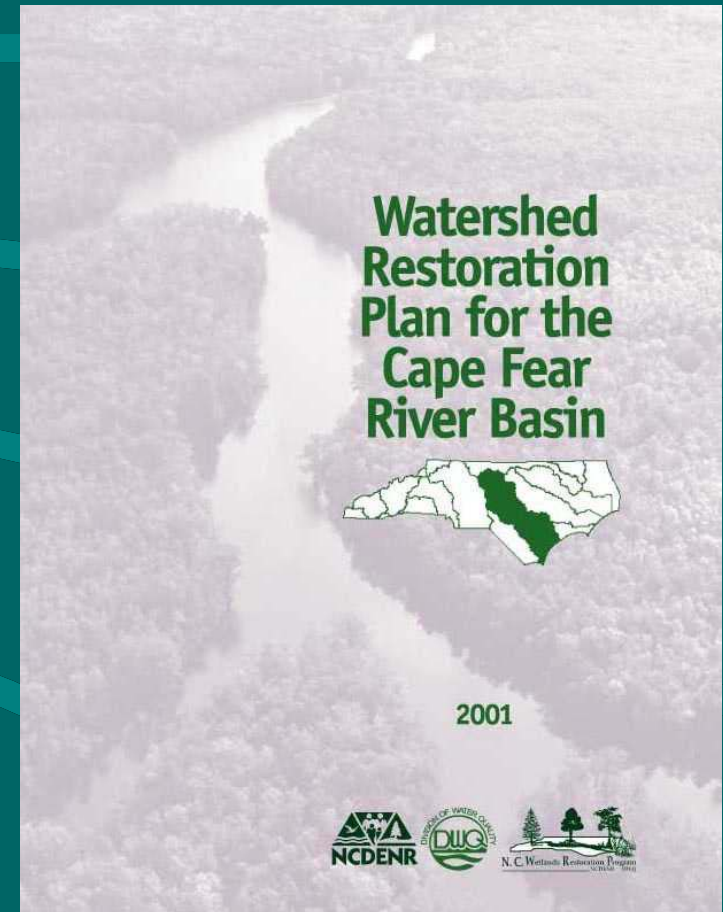


- **Local Watershed Planning**

**Ecologically Effective Projects**

# Watershed Restoration Plans

- Legislative mandate
- Build on state basinwide initiative
- Updated on same five-year cycle
- Identify 14-digit HUs of focus and provide justification
- Targets chosen based on need and opportunity for restoration



# Local Watersheds targeted based on:

## 1. Restoration Need

- Watershed Pollution Sources
- Local Concerns

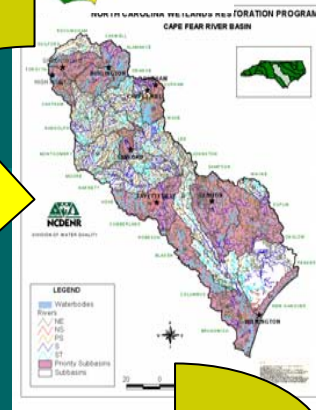
## 2. Restoration Opportunity

- Land Use Changes & Development Pressures
- Opportunity to imp. multiple projects & build upon existing



# Targeting Local Watersheds

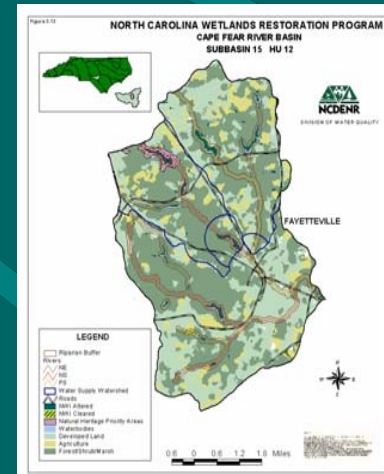
Basin



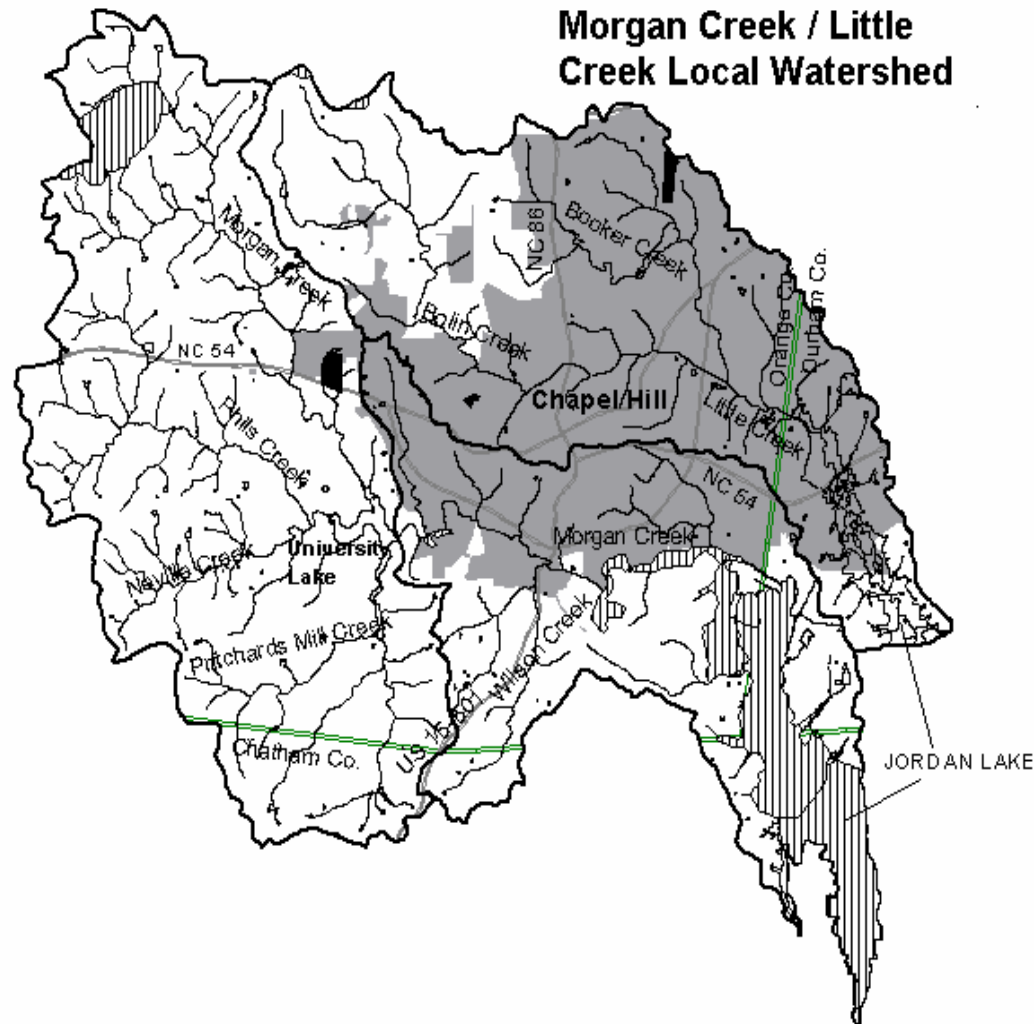
Subbasin



Local  
Watershed



# Watershed Restoration Planning at the Local Watershed Level

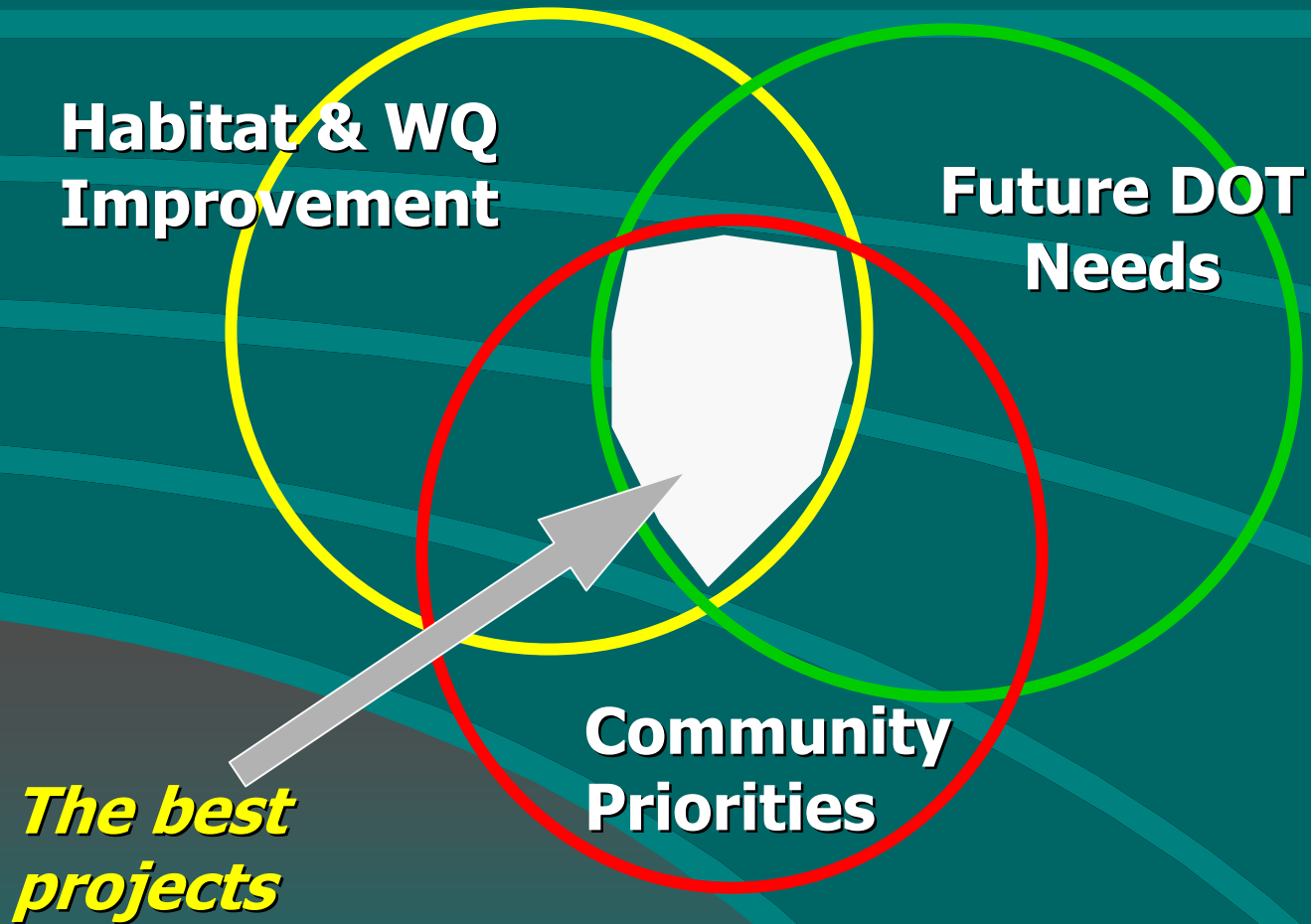


# How is NCWRP able to Develop and Implement LWPs?

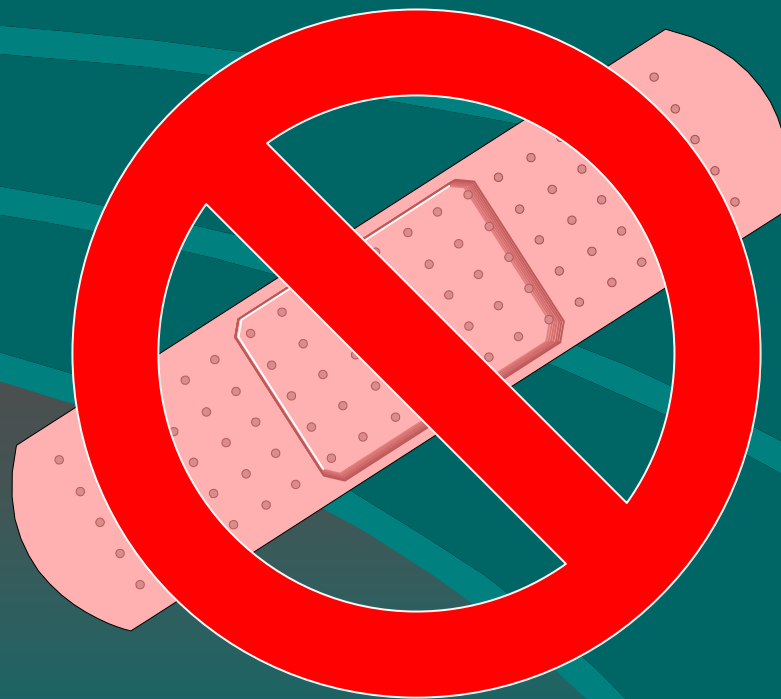
- **DOT MOU - Local Watershed Plans help address projected DOT road impacts**



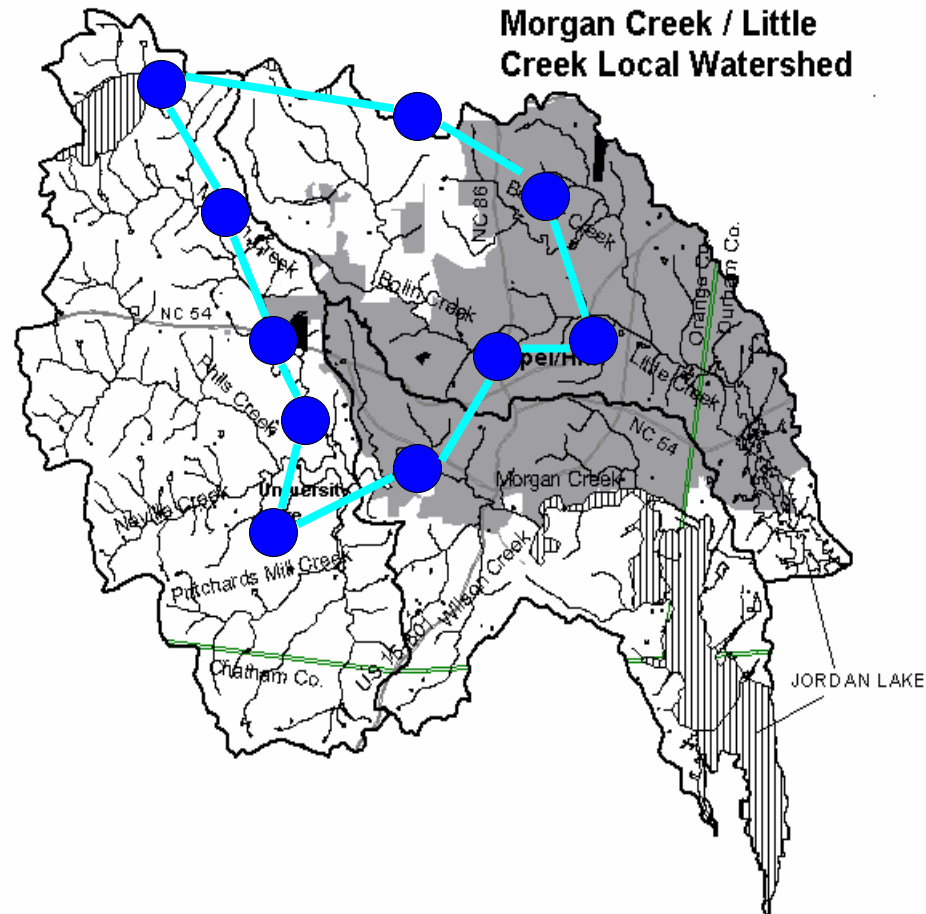
# Goal: The Ultimate Nexus



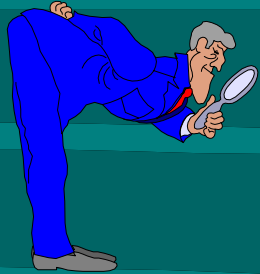
# Why is NCWRP Interested in Developing Local Watershed Plans?



# Comprehensive Planning for Partnering Restoration Efforts

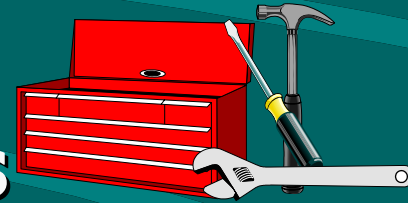


# Purpose of Local Watershed Planning Effort, The Four "I's":



- Inventory watershed problems / intact and degraded functions

- Identify solutions

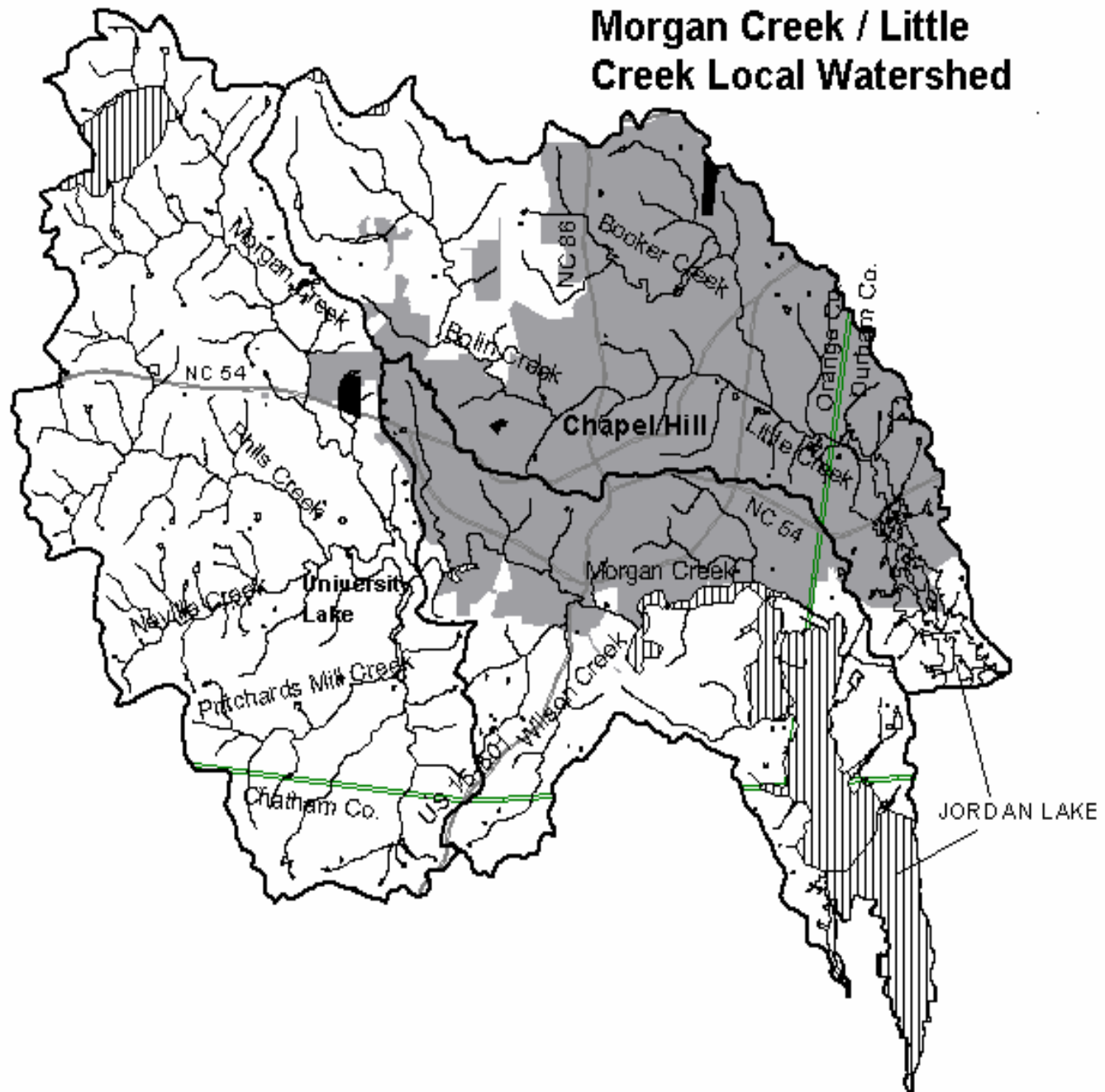


- Involve locals



- Implement projects & strategies

# Morgan Creek / Little Creek Local Watershed



# **Watershed Selected Based on:**

- **Degraded water quality due to NPS Pollution - 303(d) list**
- **Water Supply Watersheds**
- **Local support & concerns expressed: wq, flooding, etc.**
- **Rapidly changing land uses**
- **Other water quality initiatives already underway**
- **Projected DOT impacts**

# Potential Elements of a LWP

- **Watershed assessment**
- **Wetlands and stream restoration projects**
- **Local growth management initiatives**
- **Stormwater BMP projects**
- **Water supply protection strategies**
- **Education and technical assistance program**

# **What can this Process do for You?**

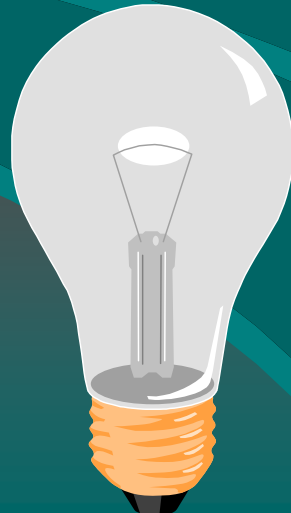
**† Can provide a localized strategy for implementing restoration projects to address NPS poll. for water quality improvement & protection**

**† Provides strategies to improve & protect sensitive resources in advance of future impacts**

**† Could help Local Govts. meet some Phase II requirements**

# **Why is Your Involvement so Important?**

- **Irreplaceable local expertise and experience**
- **Knowledge of existing water quality projects & what recommendations may be feasible**



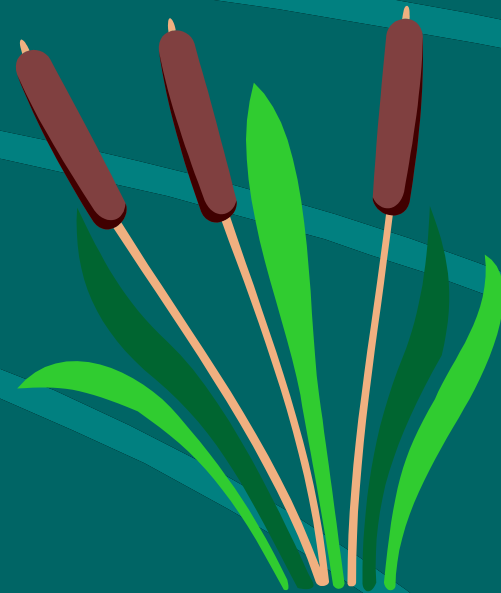
# Planning for Action, Guaranteed Results

**Action!**



# **NCWRP works to implement LWPs through :**

- **Restoration**
- **Creation**
- **Enhancement**
- **Preservation**



# Wetlands Restoration



# Stream Restoration



# Buffer in Need of Restoration





# **NCWRP provides long-term protection for projects by:**

## **Purchasing**

- permanent conservation easement
- property in fee simple



## **Accepting Donations (for tax credits)**

- permanent conservation easement
- property in fee simple

# **What Does NCWRP Provide?**

- **Project design and construction**
- **Permit acquisition**
- **Implementation project management**
- **Monitoring for 5 years minimum**
- **Long term management**

# **NCWRP - Other Opportunities**

- **Can provide technical assistance**
- **Can partner in applying for other grant / funding resources to compliment restoration efforts**

**To obtain more information  
on either the Program or the  
implemented projects:  
<http://h2o.enr.state.nc.us>  
and select Wetlands  
Restoration Program**